

# Oak to Timberline



## Evacuation Guide



0 2.5 5 Miles

December 2007

### Roads

#### Evacuation Type

- Other Roads
- Main Evacuation Route
- Fire Equipment Road
- No Outlet
- Not Recommended
- One Way

### Fire Stations

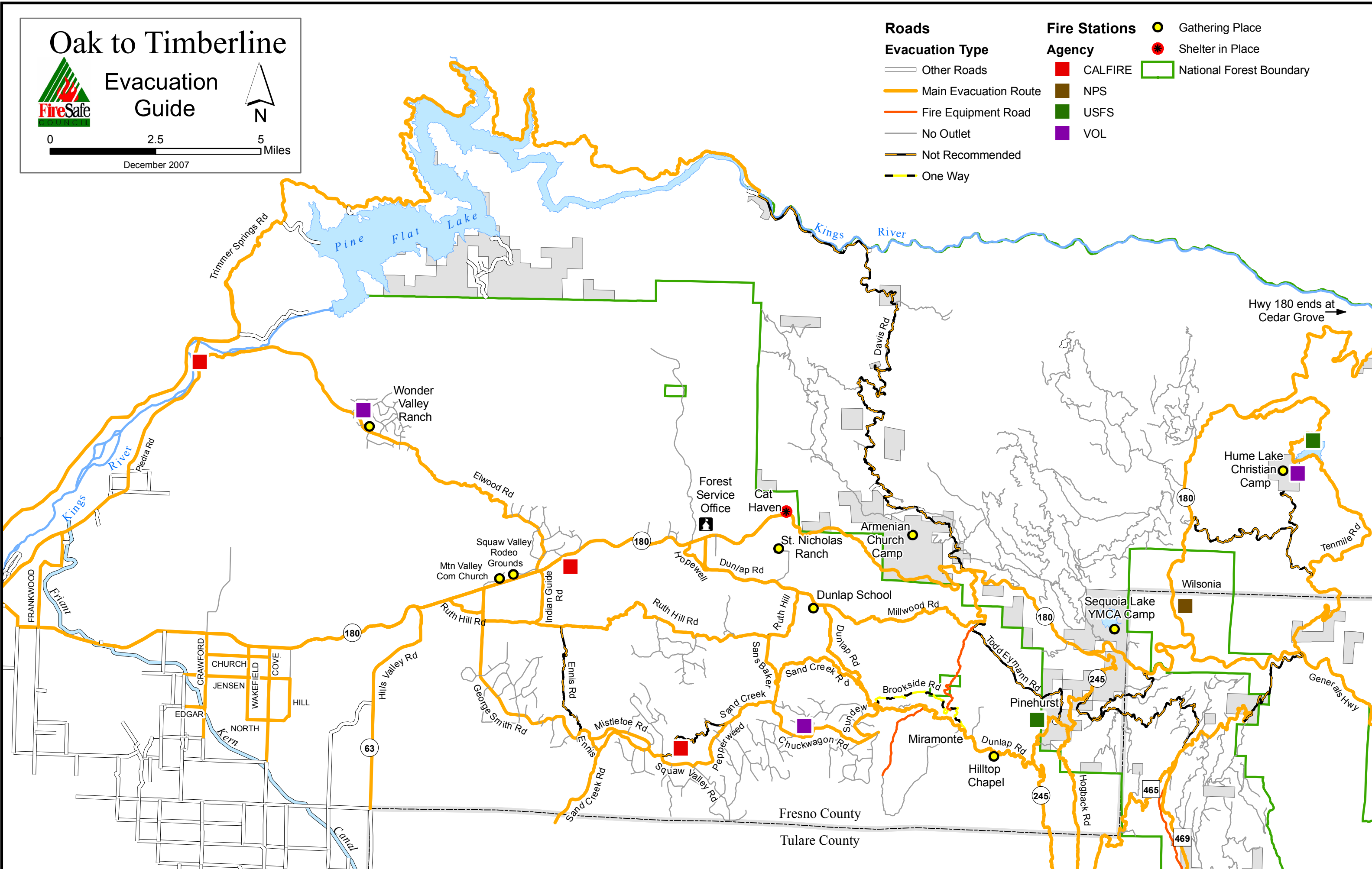
#### Agency

- CALFIRE
- NPS
- USFS
- VOL

Gathering Place

Shelter in Place

National Forest Boundary



Hwy 180 ends at Cedar Grove

Fresno County  
Tulare County