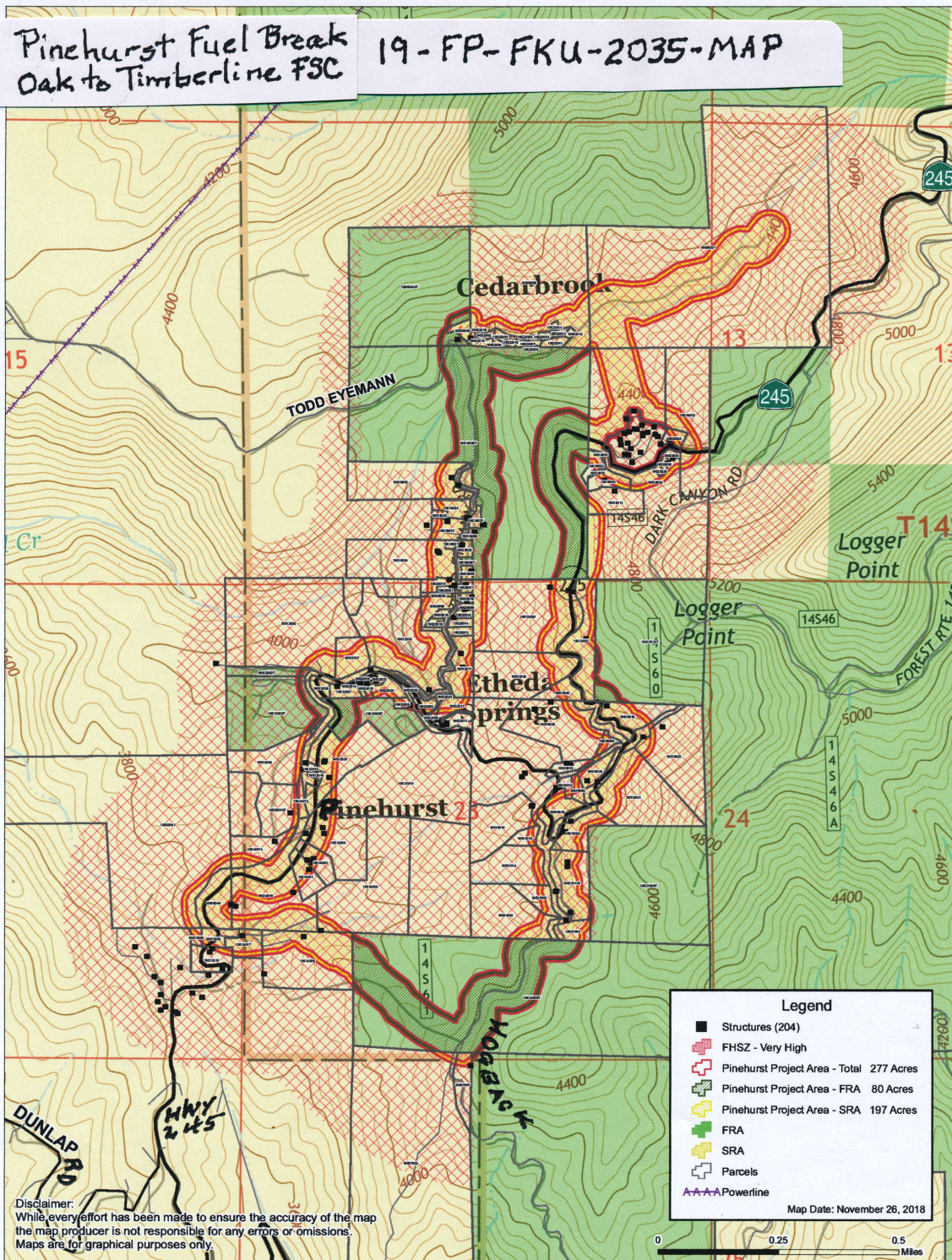


Oak to Timberline Fire Safe Council

Serving the Foothill and Mountain Communities east of the
Friant-Kern Canal and south of the Kings River in Fresno County

PO Box 762, Squaw Valley, CA 93675

info@oaktotimberline.org | www.oaktotimberline.org | (559) 336-4147



Shaded Fuel Breaks



In a shaded fuel break, trees are typically spaced so their crowns no longer touch, lower branches are pruned, and brush and dead and down material are removed or replaced with masticated material. Shaded fuel breaks are most often placed strategically on ridgetops, roads, and around structures.

Shaded Fuel Break photos demonstrate the site before the completion of work and after the creation of the shaded fuel break. Text and photos courtesy CalFire. View the entire fuels reductions guide at <https://www.fire.ca.gov/media/4jgerfjh/fuels-reduction-guide-final-2021-interactive.pdf>

Work on the Pinehurst Community Fuel Break has already been completed on Federal (Sequoia National Forest) lands on Hogback and Todd Eymann Roads. In these cases, brush clearance was completed with hand crews, and piled for later burning. If you'd like to see what a shaded fuel break will look like, please check out these locations.

BEFORE



Shaded fuel breaks along roadways remove heavy fuels and are designed to prevent roadside sparks from becoming a devastating wildfire. They also create safer ingress and egress routes for emergency personnel and residents.



AFTER